

Newsletter of the Washington Ship Model Society

<http://www.dshipmodelsociety.org/>**Make a**  
*I Will***New Year's Resolution...**  
*Complete Last Year's Model and  
Get Started on Another Favorite By April!***Skipper's Corner**

(Editor's note: Our Skipper was laid low, suffering from a severe coronaviruses infecteiuoses which can be spread by physical contact. In deference to the age of his laptop, and knowing how vulnerable they are to viruses, he deferring his comments until the February Newsletter. So Doug, speaking for all of our members we are pulling for your quick recovery from the er,sniffles?)

**SKIPPER'S WORDS WORTH  
REPEATING**

- Share your ideas for new activities or venues that promote ship modeling or improve WSMS.
- Share your experiences and knowledge by making a presentation at one of our regular meetings and/or an article in The Lynx. Not only bring your current build to a meeting but also take a couple pictures of what's on your workbench right now for The Lynx and tell us about the most recent challenges in your build, either surmounted or staring you in the face.  
*Doug Wilde*

**JANUARY REGULAR MEETING  
SATURDAY, JANUARY 10, 2015**Hollin Hall Senior Center, 1500 Shenandoah  
Road, Alexandria, VA 22308**DIRECTIONS**

- ☸ From the beltway go south on Route One to the first left, Fort Hunt Road (SR 629). Head south about 3.5 miles to Shenandoah Road. There will be a Shell Gas station on the near corner and the Hollin Hall Shopping Center sign on the far right corner.
- ☸ Turn right on Shenandoah Road and proceed to the driveway on the right just beyond the 7-11. There is a large parking lot.
- ☸ Enter by the door under the green roof. Turn right; there is an elevator. Go to second floor, go to end of hall, turn right and look for room 213 or 217.

**Visitor's Always Welcome!**

## UPCOMING EVENTS OF WSMS INTEREST

### *National Society of the Children of the American Revolution Museum WSMS Model Display*

The “National Society of the Children of the American Revolution Museum” invited WSMS to participate in their National Project for this year, the focus of which is the Star-Spangled Banner and the War of 1812. Two of our members have provided related models for display. The exhibit runs to June 1st, 2015.

### *February Meeting Speaker Presentation*

For our Regular Meeting in February, a presentation by Mr. Ryan Peeks, a Research Fellow with the Office of the Secretary of Defense Historical Office, has been arranged. Mr. Peeks, a Doctoral candidate, will talk about Naval warships that were being built and/or planned but subsequently cancelled due to the five party Washington Naval Treaty entered into shortly after the end of World War I

### *Chesapeake Bay Working Craft Tour*

We are working with our associate member Ed Somers, a superb modeler of regional working craft, to arrange a 2015 visit to the Eastern Shore to meet with local work boat builders and waterman to learn more about their craft. Please stay tuned!

### *2015 Cabin Fever Expo Model Engineering Show & Auctions - York PA, 10-12 April*

It will be held in the Utz Arena York Fairgrounds & Expo Center 334 Carlisle Ave. York, PA 17404. It is the largest show of its kind in the country!

<http://www.cabinfeverexpo.com/>

### *IPMS Northern Virginia Model Classic 25 April 2015*

Fairfax High School, Fairfax, VA

### *St. Michael's Classic Boat Festival, June 19-21*

An Annual gathering of classic full- sized boats from the mid-Atlantic, with model boat/ship participation from the St. Michael's ship modeling group. [www.chesapeakebayacbs.org](http://www.chesapeakebayacbs.org).

### *Annual Wooden Boat Show, Mystic Seaport, Mystic, CT.*

Held in June, America's largest gathering of classic and wooden boats, this year featuring the recently-restored whaler Chas. W. Morgan--the last of her breed.

[www.thewoodenboatshow.com](http://www.thewoodenboatshow.com).

### *Task Force 50 Regatta, August???*

TF 50 is an RC model ship club based in York Pennsylvania. Every August it holds a regatta of radio-controlled boats on Lake Redman, near York PA. The club specializes in replica military ships and 1/96 scale models. The vent includes static and steering competitions featuring military, civilian, work boats, sailboats, pleasure craft, tugboats, carriers, destroyers, steamers, paddlewheelers, electric, steam and sailboats using electric motors or sails. Plaques are awarded for steering, and boat accessories and kits are donated as prizes from sponsors.

*Note: If anyone has any information on when and how to sign up please let the Lynx editor know!*

### *CBMM 11th Maritime Model Expo*

The Model Guild of the Chesapeake Bay Maritime Museum (CBMM), the North American Steamboat Modeler's Association (NASMA), and we the Washington Ship Model Society, have annually sponsored the 2-day Model Expo in St. Michaels, MD in May. However, the Museum has decided to now hold it in October and link it to the Mid Atlantic Small Craft Festival (MASCF). The MASCF is an intriguing event in its own. It consists mostly of hand-made wooden boats of all kinds. Most of the workmanship is superb. The number and variety of vessels is huge. You will enjoy it along with our own activities. So..., the Maritime Model Expo is now scheduled for Saturday and Sunday, October 3 and 4, 2015. More information coming!.

## DECEMBER MEETING MINUTES

The meeting was held at the Hollin Hall Senior Center on December 13, 2014 and was conducted by our Skipper, Doug Wilde. There were 14 members and a first time guest, Rolf Thoresen, present. Leo Hobbs, although not present, was voted in as a member.

### In Attendance

Doug Beatty	Warren Yaun
Rolf Thoresen	Roger Frye
Gene Larson	Doug Wilde
Peter Gutterman	Larry Smith
John P. Downing	Rick Yorczyk
Lou Husser	Tim Rulon
Charlie Bingay	John Bellinger
Brion Bowles	

Brion presented a short history and demonstration of his highly award winning RC model, the SHILOH.

A list of potential activities was presented: A trip to national archives, April IPMS meeting, NCMSS in September (we would have a special room), Model Expo in October, WSMS and PSMS Regional meeting in June, and the February 28th IPMS meeting in Richmond. Help from members is required to help with the Middle Atlantic Workshop.

Lou discussed the status of the Workshop to be held just outside of Baltimore. Lou is in contact with other interested parties and will update in January. However questions were raised by Lou regarding the \$60 per person charges by the site, the availability of agenda speakers, and vendor interest, given attendance. He also presented an outline of a schedule for the one day event. Open at 7:30; 10:00 Opening ceremonies and Keynote address; 11:30 -12:00 showing of models; Buffet lunch; 1300-1430 master presentations and RC demo; 4:30 PM close.

**Ship's Clerk Doug Beatty 29 Dec 2014**



## BRIDGE TEAM NOTES AND REPORTS

### *Skipper*

I gave our newsletter editor a calendar listing meeting dates for the rest of the year. Watch for it in the February newsletter. I want WSMS folks to pick a date for hosting the Focus Meeting.

### *First Mate*

Nothing significant of note to report.

*John Williams*

### *Ship's Clerk*

See December Minutes for comments.

*Doug Beatty*

### *Ship's Purser*

Member's Dues – Based on a review of WSMS 2014 expenditures, and as supported by the membership, next year's dues will be \$20

*John Reeder*

### *Webmaster*

On our website, I have the WSMS Calendar of Events for 2015 (always subject to change). I added the Archives trip, and it made me think that this calendar of events could be a useful planning tool for all of us. For example, maybe we could get people to sign up months in advance to host a Special Interest Meeting, participate in related activities like IPMS and model soldier shows, down rigging, etc..

*Carl Erikson*

## REGIONAL WORKSHOP REPORT

As you know we have been planning a regional event that was scheduled for June 13 to be held at The Maritime Institute (CCMIT) near BWI Airport. We were working this with the Philadelphia Ship Model Society (PSMS) who we leaned heavily on them for their experience with these types' events.

## WORKSHOP REPORT (Cont)

At the December meeting Lou Husser, our coordinator, discussed the program plan but more importantly, the problem with the registration cost. The admission fee, driven by the CCMIT, was proving too steep at \$60.00+ even despite the many amenities included in that fee. We needed to have more reasonable assurances that regional modelers would find the program worth the price or otherwise cancel with CCMIT and postpone the event.

As a result, we have cancelled the contract and were refunded our \$500 down payment. Nevertheless, we have a cadre of solid volunteers to organize such an event and we are re-grouping looking at options, especially venues that are more affordable to re-attack the problem.

*If you have experience in these areas or are just willing to help, contact Lou Husser at 540 659-7088 and by mail at [LBHusser@verizon.net](mailto:LBHusser@verizon.net)  
Join the Team!*

## MEMBER NEWS

Lou Husser on behalf of the WSMS responded to a request from the Lorton Prison Museum for help in repairing a former prisoner's folk art style model of a galleon. The repairs were provided at no charge to the museum. The restored model was presented to the Museum staff by Lou on Sunday, 11 January. Lou, accompanied by our Skipper Doug, accepted their thanks on behalf of the WSMS at a short ceremony and is now on display. See the picture of the restored model on the model pictures page.

*Have something interesting you would like to share about yourself or another member?*

*Send your inputs to the editor at [LBHusser@verizon.net](mailto:LBHusser@verizon.net)*

## MISCELLANEOUS MEMBERS NOTES

**A column where members can contribute any notes or recommendations they believe are of interest to ship modeling.**

❖ **From Gene Larson** - I received a request from Mrs. Carol Strange stating ...,

“You may have heard that Richard passed away on November 5, 2014 here in Cypress TX. He had a battle with Parkinson's disease and he remained positive and cooperative throughout his illness.

Ψ *Editor's Note: Richard Strange, apparently a former Skipper and Purser, was a long time member of WSMS who moved away sometime in the late 90's(?)*

Robert Hewitt of the San Diego Maritime Museum will give an overview of Richard's participation in the NRG and the Washington Ship Model Society.” Mr. Hewitt is seeking any records we might hold which show his years of participation or offices held. Our Historian, Rick, is helping to dig through the WSMS records to obtain any info that we may still have available. By all accounts Dick was a great asset to the WSMS (as well as the NRG).

## FEBRUARY MEETING GUEST SPEAKER & TOPIC

## WSMS MEMBER MODELS PHOTO PAGE

American And British Battlecruiser  
Development From The Battle Of Jutland To  
The Washington Conference, With A Brief  
Coda On The Post-Treaty Heavy Cruisers.

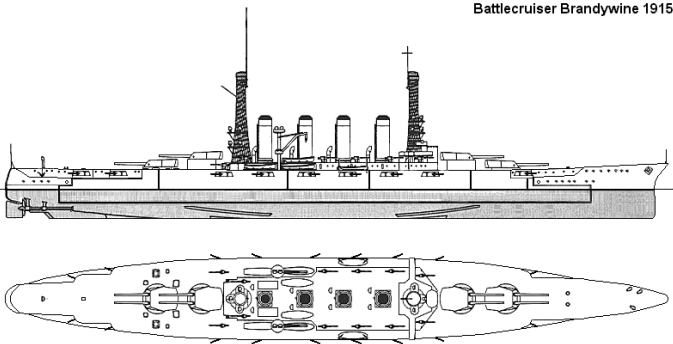
*Presented By*

Mr. Ryan Peeks, Ph.D. Candidate  
Department of History  
UNC-Chapel Hill

Mr. Peeks is a Ph.D. candidate in history at the University of North Carolina he is currently working in the Secretary of Defense Historical Office while finishing his dissertation, which looks at battlecruisers in the U.S. and Britain during the World War I era. Mr. Peeks has been interested in military history for as long as he can remember. His topic came about when he attempted to draft a senior thesis in college on battlecruisers and realized that, apart from the Royal Navy's battlecruisers, there weren't very many books written about them. Turning that interest into a dissertation seemed like a good way to leverage the research he had already done. Mr. Peeks hopes to find a job as a historian or policy analyst in or around the federal government.



Battlecruiser Brandywine 1915

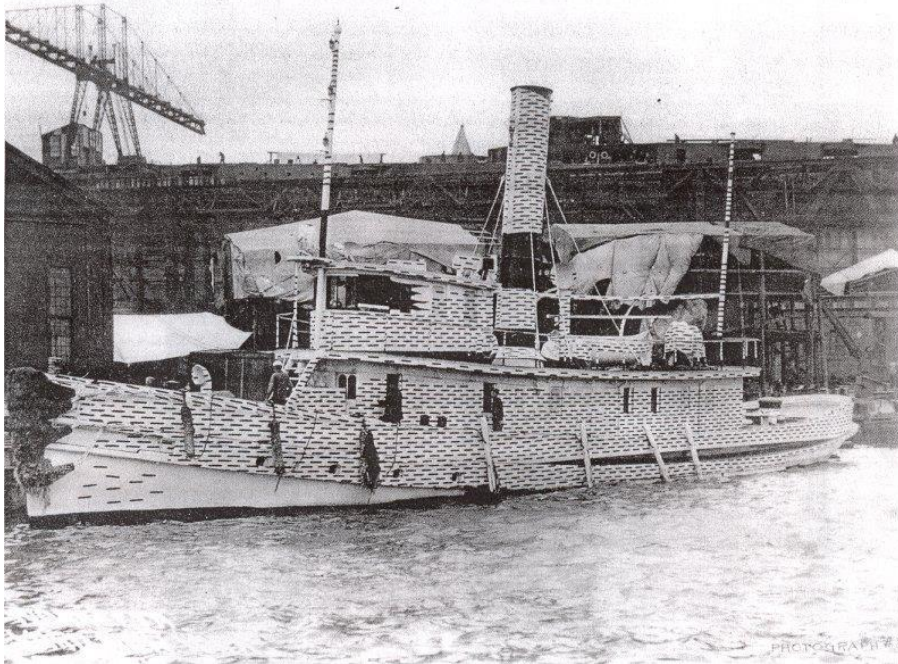


## December's It Ought To Be a Model Answer

**What is the vessel's name?** - Narkeeta (Harbor Tug No.3)

**Who was she built for?** – the US Navy

- Laid down, in April 1891, at City Point Iron Works, Boston, MA.



- Launched, 11 February 1892
- Commissioned (Harbor Tug No. 3) 14 April 1892, at Navy Yard Boston, MA.
- Designated District Harbor Tug (YT-3), 17 July 1920
- Decommissioned, April 1923

**Why does she look like a Lego's project?** - She was painted with an experimental "brickwork" camouflage scheme in 1892. Black stripes on the white background produced a soft gray effect at moderate distances. Larger black patches were applied to those areas which usually reflected light. Visibility of the ship was reduced when the light was behind the observer.

## No Winners Again!!

## JANUARY TIP OF THE MONTH

### Glues Used in Ship Model Building

Different modeling mediums do not all necessarily share the same adhering when it comes to glueing.

For Wooden materials, wood glue of course are best. They work especially work well when the wood that has been steamed or at least dampened which facilitates bending. Thicker grades of CA glue or even Epoxy will work as well.

For Plastic ship models CA type glues are generally employed. They can be obtained in three thickness grades. Which thickness to use is dependent upon on what you are trying to accomplish with it. Thin CA is good for initial assembly and dries within a few seconds. CA+ (Medium gap filling) is useful where some adjustment time for mating parts is needed as well as helping fill small gaps between parts being joined. The cure time for CA+ is about 20 to 30 seconds. Thick CA is useful when even more positioning time is required. It also works well as a gap filler. Be aware though, CA IS VERY FUMEY so, work in a well ventilated area

Epoxy provides exceptional strength especially where joints are encountered; for example when installing engine mounts, shafts, or other parts that will vibrate or become wet. 5-Minute epoxy is often used for small gluing requirements where intricate alignment is not required. Working time for epoxy is about 5 minutes, and handling time roughly around 15 minutes. Fully cured requires a minimum of an hour.

## New Products Notes

Airbrushes.com a company based in the UK caters to hobby painters is now carrying the Wilder line of paints and tools. They have a lot of tools to help make modeling easier. Here are a few modeling aids that can help you build a better model. - <http://www.modelwarships.com/reviews/misc/Wilder/Tools/Airbrushes-review.html>

- *Contributed by Bruce Buchner*

Note: The Lynx Editor reserves the right to edit contributions as he feels may be appropriate

## CLASSIFIEDS

**Model Ship Repair Services Needed:** I have had this model ship for the past fifty years. It was a wedding present to my great aunt & uncle. It must be at least 135 years old. It is perfect but needs cleaning. The white strip of paint on the body was put on there by my brother before my parents caught him! I am sure it can be removed. Could you advise me who would be interested in seeing, cleaning, and perhaps evaluate it. Thank you so much. Contact: Dolores Solyst" [dodiea2011@gmail.com](mailto:dodiea2011@gmail.com)



## FOR SALE

### Tools Available to WSMS from Gene Larson

Due to the need to downsize our “stuff”, the following tools are available to WSMS members. There will probably be more items later. If you are interested we can discuss details regarding the accessories and the **Midget Universal**.

A model maker’s multifunction woodworking machine. Converts from a drill press to a table saw, sander, and lathe. Many of the original attachments are included.



Advertised new by manufacturer, William C. Roemer, New Haven, CT, in 1935 for \$23 with motor, \$12 without motor. It does not meet the 100 year antique criteria, but it is a unique addition to a tool collection. Obtained from a fellow model builder in about 1980. Weight about 30 pounds (heavy)

### Unimat 3 metal lathe



A small metal turning lathe, with many attachments including a wood table saw and a milling head. Can be used for small wood turnings. This is the best of the Unimat series of metal lathes. The original motor has been replaced with a motor that does not have a

price. I want to give WSMS members first choice before placing them on eBay or Craig’s List.

Gene Larson, [ELLshipmodeler@aol.com](mailto:ELLshipmodeler@aol.com) 702/360-2111

production limiting duty cycle. The original motor is included. Instruction book. Below photo is the current configuration, which is easily changed. Purchased in Washington, DC at Fries, Beale and Sharp about 1980

### Kitzerow model builder’s multi-function saw.

Named for Jack Kitzerow, the designer and builder, this small model builder’s machine is a combination table saw and disk sander. It was obtained in about 1990 from Jack, a friend who then lived in Tampa, FL. Building plans and instructions appeared in an issue of the Nautical Research Journal.



### Shopsmith Scroll Saw

A high end scroll saw with precision components. Accepts a variety of blades from very fine to heavy. Makes difficult inside cuts without cutting through the wood. Extra blades included.





### Hegner Scroll Saw

A high end scroll saw with precision components. Accepts a variety of blades from very fine to heavy. Makes difficult inside cuts without cutting through the wood. Extra blades included.



### Carving/Duplicating Machine

I once manufactured wooden ship model half hull kits and finished models. To expedite the production, I purchased a Kurt Star Carver duplicating machine (photo below). It cut roughing-out time for one hull from 8 hours down to 30 minutes. It is mounted on a stand



with casters so it can be easily moved. The carver off the stand weighs a hefty 200 pounds. The carver is similar to the very long (up to 20 stations) carving machines used, for example, to rough out wooden duck decoy blanks and ship model kit solid hulls.

### Derbyshire Jeweler's/Watchmaker's Metal Lathe

Requires a learned talent to use properly, but can easily be used like a standard small parts metal turning lathe. Includes many valuable collets. Missing the tail stock point.



While cleaning out our basement, we came upon a ship model of the ship "Red Jacket" made by Piel Craftsmen. I believe the model, now in disrepair, was passed on to my late father in NY many years ago. We are not connected with the sea in any way, so I have no idea how he got it. In December, our son visiting from Seattle helped us get started in our down-sizing project. He took photos of the ship and contacted Piel Craftsmen in Newburyport, Massachusetts. They told him it would cost about \$300 to repair. We have no interest in keeping the ship ourselves, but do value craftsmanship and would like to help find this ship a new home. Do you think anyone in your group in this DC area would be interested in buying this from us and repairing it? I think it would go to the best offer. We live in Glenn Dale, Md, in PG County not far from Goddard Space Flight Center. **Contact:** Ms Lynn Kenny at [pattylynn46@gmail.com](mailto:pattylynn46@gmail.com)



**Flying Cloud Model For Sale:**

Attached are 2 photos of the Flying Cloud model that I'm offering for sale. I'm offering the model, plans and instructions for \$100.00 and the acrylic case (vitrine) for \$150.00. **Contact** - Mike [DoyleDoylestudios@verizon.net](mailto:DoyleDoylestudios@verizon.net)

*Newsletter Ad Policy*

*Members may submit as many ads as they choose for printing in the Lynx. They may be either want or for sale ads and should normally be limited to a 100 or less words. Non-members may also submit one ad to a monthly newsletter, also limited to a 100 words. The acceptance of the ads are at the discretion of the editor. He will also have blanket authority to edit the contents as he believes appropriate.*

